

# High impact tank cleaning machine

## MeshClean

### Series 5T2/5T3



#### Features:

- High efficiency thanks to especially powerful solid jet nozzles
- Also suitable for smaller tanks with stubborn soiling
- Active self-cleaning through special nozzle geometry
- Particularly low-maintenance

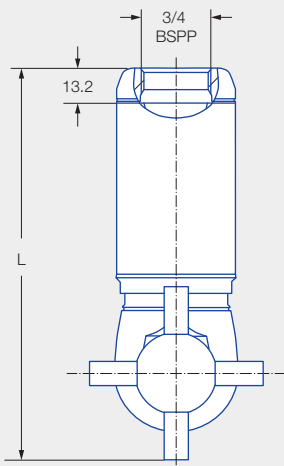


FDA

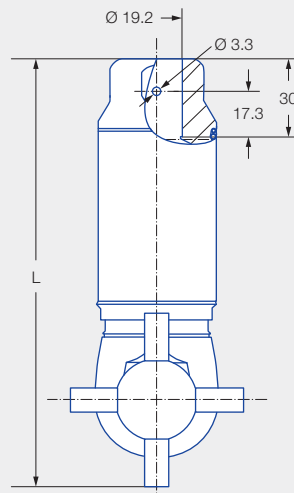


**ATEX version  
available on  
request**

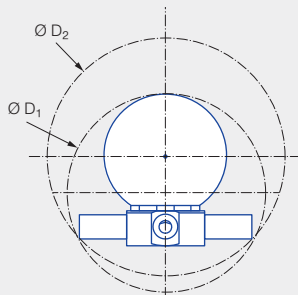
Series 5T2/5T3



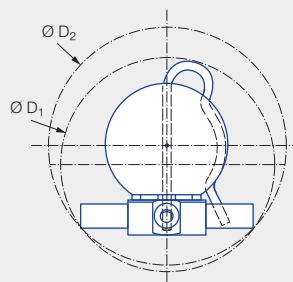
Female thread



Dimensions of slip-on connection  
according to ASME-BPE (OD tube)



Insertion diameter  $D_1$ , and  
interference circle diameter  $D_2$   
of the threaded connection



Insertion diameter  $D_1$ , and  
interference circle diameter  $D_2$   
of the slip-on connection





<b>Max. tank diameter [m]</b>	0	3	6	9	12	15	18	21	24	27
-------------------------------	---	---	---	---	----	----	----	----	----	----

**Cleaning efficiency class**  
5

**Max. temperature**  
150 °C

**Installation**  
Operation in every installation position

**Bearing**  
Ball bearing

**Material**  
Stainless steel 1.4404 (316L), PTFE, PEEK, EPDM

**Recommended operating pressure**  
5 bar

**Filtration**  
Line strainer with a mesh size of 0.2 mm/80 mesh

**Rotation monitoring**  
Sensor compatible, for information: See Page 225

**Weight**  
1,0 kg

**Adapter**  
3/4 BSPP is compatible with HygienicFit

[www.lechler.com/de-en/medialibrary/videos-general-industry](http://www.lechler.com/de-en/medialibrary/videos-general-industry)  
Or scan the QR code.



Spray angle	Order no.			V̇ water [l/min]			Dimensions [mm]						Max. tank diameter [m]
	Type	Connection		p [bar] (p <sub>max</sub> = 15 bar)			Female thread			Slip-on connection			
		3/4 BSPP	3/4" slip-on connection	2.0	5.0	at 40 psi [US gal/min]	L	Ø D <sub>1</sub>	Ø D <sub>2</sub>	L	Ø D <sub>1</sub>	Ø D <sub>2</sub>	
360° 	<b>5T2.849.1Y</b>	<b>AL</b>	<b>TF07</b>	13	<b>20</b>	4	142	68	82	157	77	82	11.5
	<b>5T2.969.1Y</b>	<b>AL</b>	<b>TF07</b>	25	<b>40</b>	8	142	68	82	157	77	82	12.0
	<b>5T3.029.1Y</b>	<b>AL</b>	<b>TF07</b>	35	<b>55</b>	11	142	68	82	157	77	82	12.5
	<b>5T3.089.1Y</b>	<b>AL</b>	<b>TF07</b>	50	<b>79</b>	16	148	74	91	163	82	91	13.0

The maximum tank diameter applies to the recommended operating pressure and is meant as a recommendation only.  
The cleaning result is also affected by the type of soiling.

**Ordering** Type + Code = Ordering no.  
example: 5T2.849.1Y + AL = 5T2.849.1Y.AL

