

Rotating cleaning nozzle XactClean HP Series 5S2/5S3

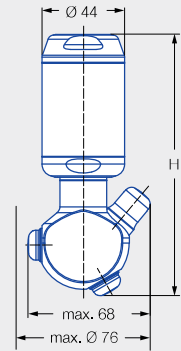


Features:

- High impact and uniform cleaning due to specially developed flat fan nozzles
- Very reliable due to robust drive unit
- Available with a wide range of flow rates and spray angles
- Compatible with Lechler rotation monitoring sensor



Series 5S2/5S3



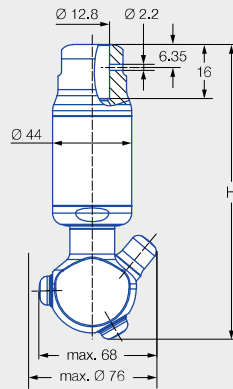
Female thread



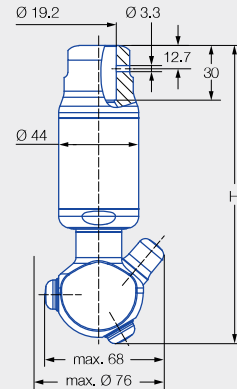
ATEX version available on request

Nozzle dimensions [mm]

Connection	Max. height H
AF	146
AH	149
AL	139
AN	139
TF05	148
TF07	164



1/2" slip-on connection
Dimension of the slip-on connection according to ASME-BPE (OD tube)



3/4" slip-on connection
Dimension of the slip-on connection according to ASME-BPE (OD tube)



Cleaning efficiency class
4



Max. temperature
95°C



Installation
Operation in every direction is possible



Bearing
Double ball bearing



Material
Stainless steel 316L, stainless steel 632, stainless steel 316, PEEK, PTFE, zirconium oxide, EPDM



Recommended operating pressure
5 bar



Filtration
Line strainer with a mesh size of 0,3 mm/50 mesh



Rotation monitoring
Sensor compatible, for information: See Page 217

Function video
www.lechler.com/xactcleanhp
Or scan the QR code.





Spray angle	Ordering no.							Narrowest free cross section Ø [mm]	V̇ water [l/min]				Max. tank diameter [m]
	Type	Code							p [bar] (p _{max} = 15 bar)				
		3/8 BSP	1/2 BSP	3/4 BSP	1 BSP	1/2" Slip-on connection	3/4" Slip-on connection		2.0	5.0	10.0	at 40 psi [US gal/min]	
180° 	5S2.953.1Y	AF	AH				TF05	1.7	25	40	57	8	3.5
	5S3.053.1Y		AH				TF07	2.0	41	65	92	13	4.0
	5S3.113.1Y		AH	AL			TF07	2.0	60	94	133	18	6.0
	5S3.183.1Y			AL			TF07	2.0	89	141	199	28	7.0
	5S3.233.1Y			AL			TF07	2.0	111	175	248	34	7.5
	5S3.263.1Y			AL	AN		TF07	2.0	135	213	301	42	8.0
180° 	5S2.954.1Y	AF	AH				TF05	1.7	25	40	57	8	3.5
	5S3.054.1Y		AH				TF07	2.0	41	65	92	13	4.0
	5S3.114.1Y		AH	AL			TF07	2.0	60	94	133	18	6.0
	5S3.184.1Y			AL			TF07	2.0	89	141	199	28	7.0
	5S3.234.1Y			AL			TF07	2.0	111	175	248	34	7.5
	5S3.264.1Y			AL	AN		TF07	2.0	135	213	301	42	8.0
270° 	5S2.955.1Y	AF	AH				TF05	1.7	25	40	57	8	3.5
	5S3.055.1Y		AH				TF07	2.0	41	65	92	13	4.0
	5S3.115.1Y		AH	AL			TF07	2.0	60	94	133	18	6.0
	5S3.185.1Y			AL			TF07	2.0	89	141	199	28	7.0
	5S3.235.1Y			AL			TF07	2.0	111	175	248	34	7.5
	5S3.265.1Y			AL	AN		TF07	2.0	135	213	301	42	8.0
270° 	5S2.956.1Y	AF	AH				TF05	1.7	25	40	57	8	3.5
	5S3.056.1Y		AH				TF07	2.0	41	65	92	13	4.0
	5S3.116.1Y		AH	AL			TF07	2.0	60	94	133	18	6.0
	5S3.186.1Y			AL			TF07	2.0	89	141	199	28	7.0
	5S3.236.1Y			AL			TF07	2.0	111	175	248	34	7.5
	5S3.266.1Y			AL	AN		TF07	2.0	135	213	301	42	8.0
360° 	5S2.959.1Y	AF	AH				TF05	1.5	25	40	57	8	3.5
	5S3.059.1Y		AH				TF07	2.0	41	65	92	13	4.0
	5S3.119.1Y		AH	AL			TF07	2.0	60	94	133	18	6.0
	5S3.189.1Y			AL			TF07	2.0	89	141	199	28	7.0
	5S3.239.1Y			AL			TF07	2.0	111	175	248	34	7.5
	5S3.269.1Y			AL	AN		TF07	2.0	135	213	301	42	8.0

NPT thread available on request.

The maximum tank diameter applies to the recommended operating pressure and is meant as a recommendation only. The cleaning result is also affected by the type of soiling.

Compressed air should be used for dry blowing for a short time only. Operation above the recommended operating pressure has a negative impact on the cleaning result and wear.

Information about slip-on connections

- Pin made of stainless steel 316L supplied (Ordering no.: 095.022.1Y.50.60.E [TF07], 095.013.1E.05.59 [TF05]).
- Depending on the diameter of the adapter, the flow rate can increase due to a leakage between the adapter and the rotating cleaning nozzle.

Ordering	Type	+	Code	=	Ordering no.
example:	5S2.953.1Y	+	AF	=	5S2.953.1Y.AF

