

Rotating cleaning nozzle PTFE Whirly Series 573/583

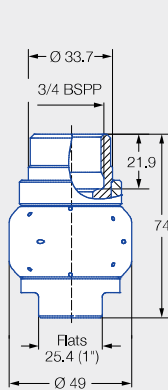


Features:

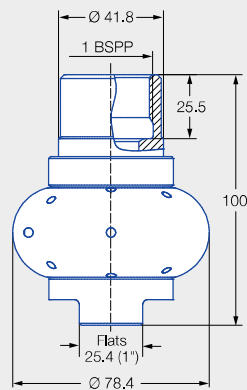
- Made entirely of PTFE
- Slip-on connection conforms to 3-A
- Suitable for corrosive environments
- Suitable for very hygienic requirements (e.g. contact with food)



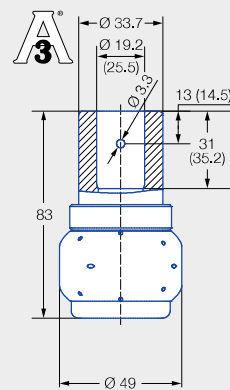
Series 573/583



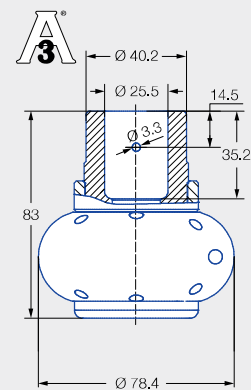
Female thread
3/4 BSPP



Female thread
1 BSPP



3/4" and 1" slip-on connection
(conforms to 3-A)
Dimension of the slip-on
connection according to
ASME-BPE (OD tube)



1" slip-on connection
(conforms to 3-A)
Dimension of the slip-on
connection according to
ASME-BPE (OD tube)

Data in brackets refers to
1" version marked with "1".

Max. tank diameter [m]	0	1	2	3	4	5	6	7	8	9
------------------------	---	---	---	---	---	---	---	---	---	---



Cleaning efficiency class
2



Max. temperature
95 °C (version for
higher temperatures
[130 °C] available on
request)



Installation
Operation in every
direction is possible



Bearing
Slide bearing made of PTFE



Material
PTFE






Recommended
operating pressure
2 bar



Filtration
Line strainer with a mesh
size of 0.3 mm/50 mesh

Function video
www.lechler.com/ptfewhirly
Or scan the QR code.



Spray angle	Ordering no.					Narrowest free cross section Ø [mm]	V̇ water [l/min]				Pin	Max. tank diameter [m]
	Type	Code					p [bar] (p _{max} = 6 bar)					
		3/4 BSPP	1 BSPP	3/4" Slip-on connection	1" Slip-on connection		1.0	2.0	3.0	at 40 psi [US gal/min]		
270° 	583.116.55	AL		TF07		2.4	47	67	82	21	1	2.5
	583.346.55				TF10	5.9	159	225	276	70	2	3.2
270° 	573.116.55	AL		TF07		2.4	47	67	82	21	1	2.5
360° 	583.119.55	AL		TF07	TF10¹	1.8	41	58	71	18	1	2.4
	583.209.55	AL		TF07	TF10¹	3.5	71	100	122	31	1	2.5
	583.269.55	AL		TF07		4.8	103	145	178	45	1	2.8
	583.279.55		AN		TF10	3.7	106	150	184	47	2	3.0
	583.349.55		AN		TF10	5.6	159	225	276	70	2	3.2

NPT thread available on request.

¹ See drawing 3 for details (Page 200).

The maximum tank diameter applies to the recommended operating pressure and is meant as a recommendation only. The cleaning result is also affected by the type of soiling.

Compressed air should be used for dry blowing for a short time only. Operation above the recommended operating pressure has a negative impact on the cleaning result and wear.

Information about slip-on connections

- Pin made of stainless steel 316L supplied (Ordering no. Pin 1: 095.013.17.06.60, Pin 2: 095.013.17.06.61).
- Depending on the diameter of the adapter, the flow rate can increase due to a leakage between the adapter and the rotating cleaning nozzle.

Ordering	Type	+	Code	=	Ordering no.
example:	583.116.55	+	AL	=	583.116.55.AL