

## Pump mounted on plate

### Faster and easier oil change in CHP Units

Plate mounted for simple fixing on tank or wall.

#### Application and function

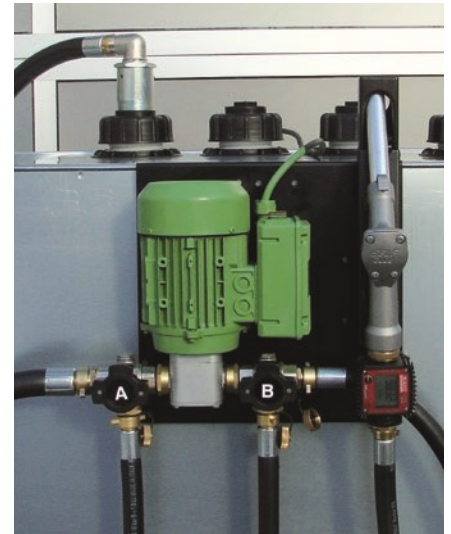
The pump is equipped with two suction and two pressure hoses. These hoses are connected to the motor of the CHP unit, a used oil tank and a tank with new motor oil. The set-up remains the same no matter if used oil is removed or fresh oil is delivered. Turning the multifunctional valves the four pipes are opened or closed accordingly.

#### Features

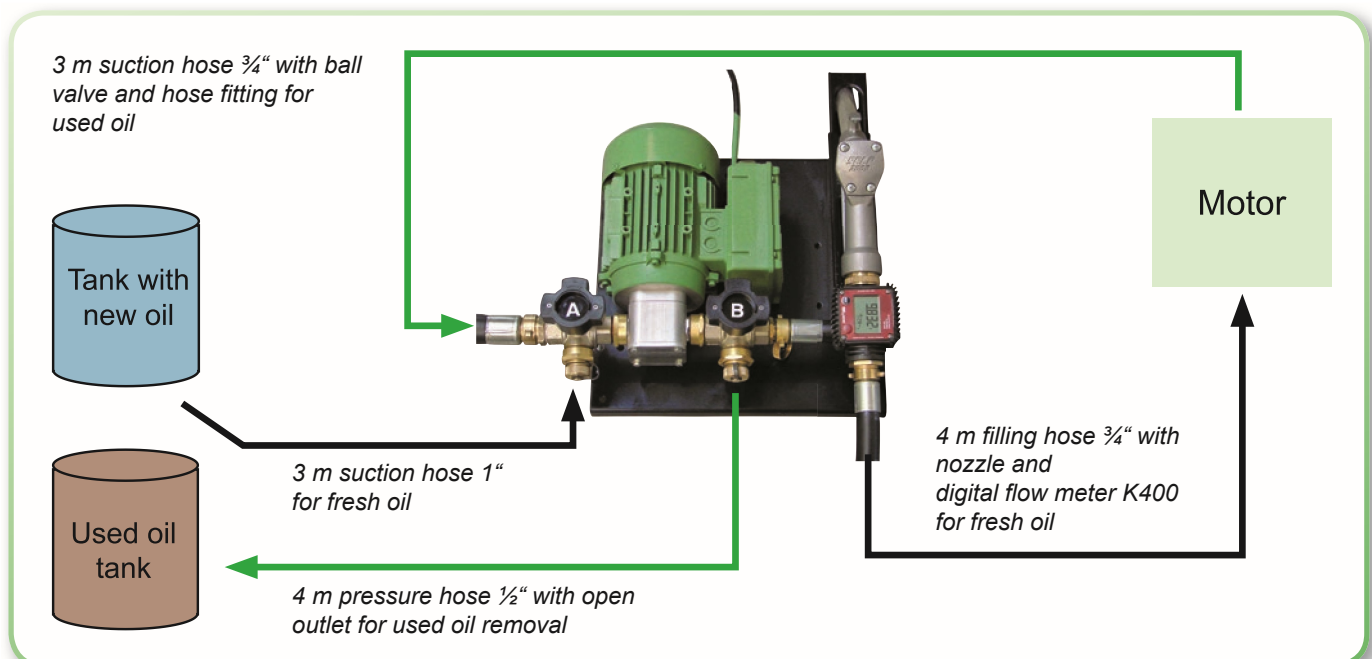
- ▶ Pump UNISTAR 2000-B - dry self priming pump with high performance - insensitive solids
- ▶ nozzle with electronic flow meter
- ▶ 2 x 3 m suction hose and 2 x 4 m delivery hose
- ▶ 2 multifunctional valves

#### Additional cleaning effect

Unlike removing motor oil through the oil drain plug pumping out oil leads to an increased removal of sedimentation inside the motor. The higher flow rate creates a suction effect and extracts dirt. The pumps handles solids without being affected.



### Detailed Illustration



## Dry running protection

Impeller pumps can be equipped with a dry run protection. A sensor switch interrupts the power supply to avoid overheating. Easy retrofitting of existing pumps.



*Dry running protection*

## Remote control with cable

Remote control for pumps with 10 m cable and ON/OFF switch. Suitable for all 230 Volt pumps, especially for remote control of the Solarcheck Mobil-center from the solar system control unit.

## Radio remote control

Small and handy transmitter and receiver.

## Pump control

Reliable control device for pumps with 230 / 400 Volt up to 16 A. Key pads and signal lights on the front side.

### Features:

- ▶ integrated level control
- ▶ programmable dry running protection
- ▶ electronic over-/underload protection
- ▶ excess voltage, phase failure and lightning protection
- ▶ reverse battery protection
- ▶ blocking protection (activation of the pump every 24 h/1 sec)
- ▶ storage of startings and working hours



*Remote control with cable*



*Radio remote control*



*Pump control*

## Changing the impeller

Useful tool to install the impeller easily into the casing. Suitable for all ZUWA impellers type A, B and C.



*Tool for changing of the impeller*

## Flexible collection pan for liquids

The foldable pans are ready to use in a few seconds. Base area and height can be adapted to the environment. Handy with low packaging dimensions and space saving storage.

The tarpaulin is made of polyester fabric, pvc coated on both sides and high frequency welded. The pans are resistant to oil and several chemicals. Available in various dimensions from 60 x 60 cm to 200 x 200 cm

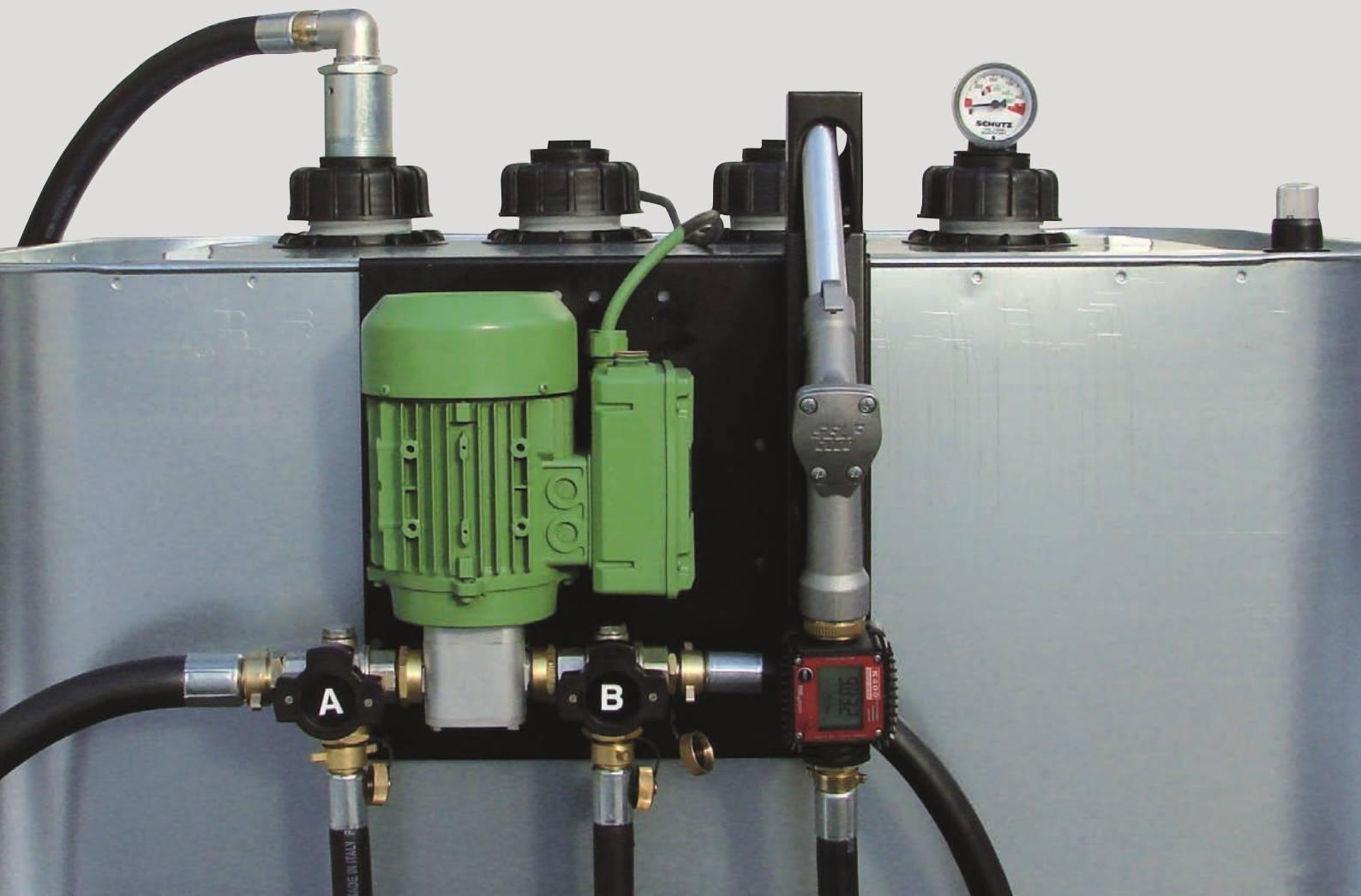


*Flexible collection pan*

**Servicecenter**  
stationary and mobile



**Extract soiled and refill clean fluids with only ONE pump!**



**ZUWA-Zumpe GmbH**  
Franz-Fuchs-Str. 13-17  
D-83410 Laufen

Phone: +49 8682 8934-50  
Fax.: +49 8682 8934-850  
E-Mail: [export@zuwa.de](mailto:export@zuwa.de)

**QUALITY  
SINCE 1946**



# Stationary ServiceCenter

## Pump mounted on plate

Stationary ServiceCenter for wall or tank attachment. The plate mounted unit is ideal for changing motor oils in large machines and plants and to be employed with a diversity of fluids as well.

### Features

- ▶ pump UNISTAR 2000-B - dry self priming impeller pump with high flow rate, insensitive to solid particles
- ▶ nozzle with electronic flow meter
- ▶ 2 x 3 m suction hose and 2 x 4 m delivery hose
- ▶ 2 multifunctional valves

### Application

- ▶ motor oil change in CHP units
- ▶ extraction of waste oil from motors, gear boxes and hydraulic equipment
- ▶ extraction of cooling lubricants
- ▶ maintenance of machines

### Function

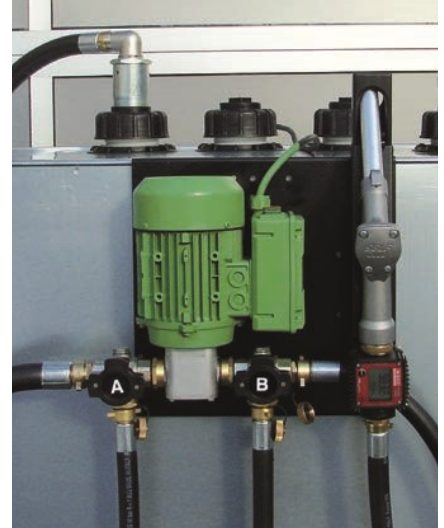
The pump is equipped with two suction and two pressure hoses. These hoses are connected to the motor of the CHP unit, to a used oil tank and to a tank with new motor oil. The set up remains the same no matter if used oil is removed or fresh oil is delivered.

Turning the multifunctional valves the four pipes are opened or closed accordingly.

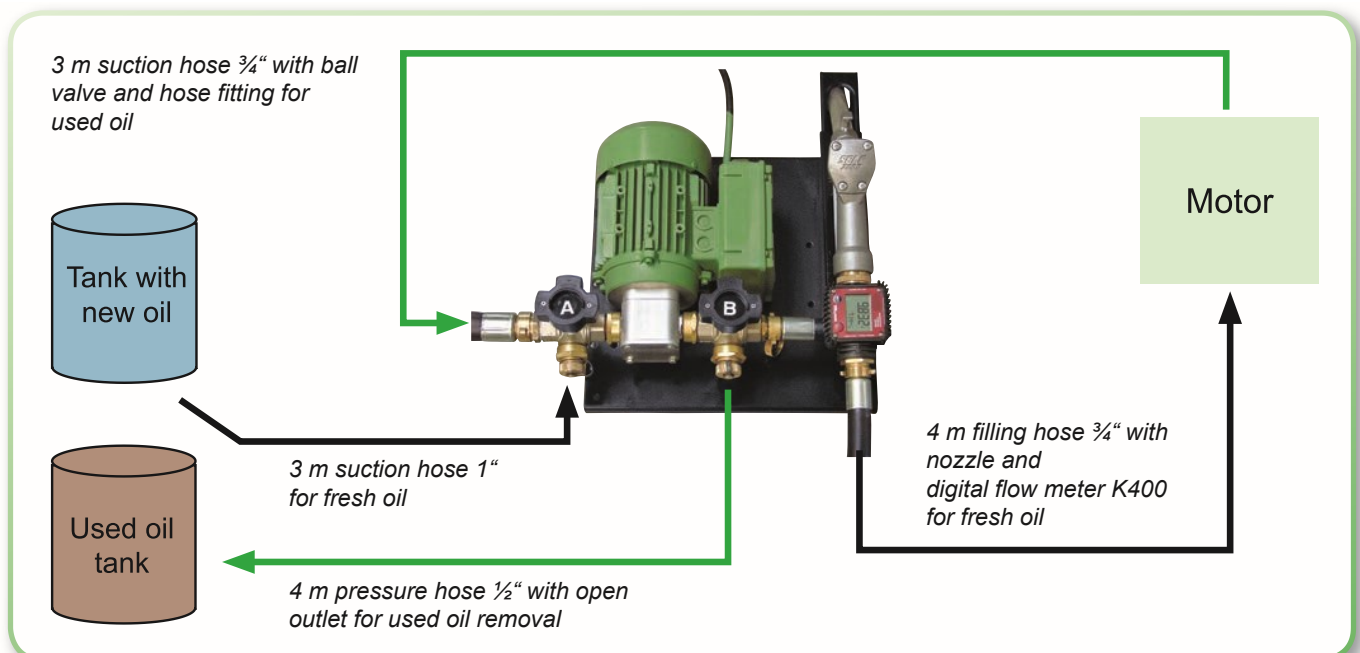
### Additional cleaning effect

Unlike removing motor oil through the oil drain plug, pumping out oil leads to an increased removal of sedimentation inside the motor. The higher flow rate creates a suction effect and extracts dirt.

The pumps handles solids without being affected by it.



## Detail Illustration



## Pump mounted on frame

Mobile unit to extract and decant clean or stained oils of all kinds.  
Easy and safe operation: no handling of heavy tanks, no spilling of fluids.

### Features

- ▶ dry self priming impeller pump with high flow rate, insensitive to solid particles
- ▶ suction and pressure hose 3 m each
- ▶ 4 suction probes suitable for dip stick inlets or filling ports
- ▶ detachable probe retainer with closed bottom to collect fluid residues from the probes
- ▶ 2 multifunctional valves
- ▶ comfortable trolley with large wheels

### Application

- ▶ extraction of waste oil from motors, gear boxes and hydraulic equipment
- ▶ draining cooling lubricants and diluted soluble oil from CNC-machines
- ▶ maintenance of machines

### Function

Apart from external suction and pressure pipes the pump has two lines to the container. With the two multifunctional valves A and B pump operation can be adjusted to either filling or draining the container.

Waste oil or any other fluid is pumped into the tank of the ServiceCenter. For disposal the unit can be moved conveniently to a collection point. Vice versa the ServiceCenter can be used for the transport of fluid to where it is needed and for pumping the fluid into a motor or vehicle.

ON OPTION:  
Nozzles and flow  
meters for oils



## Detail Illustration



rear view with suction probes



extraction and filling tank



delivering and draining tank



pumping without intermediate storage in tank