

## 2000-A

Synthetic impeller pump - for a wide variety of applications in the chemical sector. Perfect for fluids with various viscosities plus aggressive acids, bases and solvents.

*Suitable only for fluids compatible with PTFE (TEFLON®) and FPM/FKM (VITON®)!*

### Applications

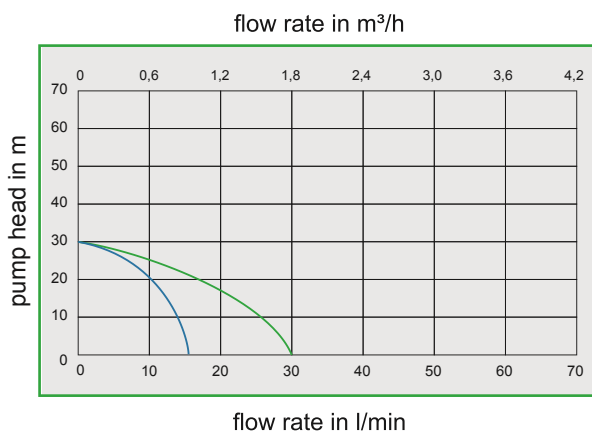
- ▶ conveying
- ▶ filtering
- ▶ dosing
- ▶ decanting
- ▶ draining

### Fluids

- ▶ acids
- ▶ bases
- ▶ solvents
- ▶ fluids with various viscosities

**NEW!**

### Characteristic curves:



ACOSTAR 2000-A

- Type A with 1400 rpm
- Type A with 2800 rpm

### Technical details

ACOSTAR	2000-A			
Flow rate max. (l/min)	15		30	
Pressure max. (bar)	3			
connections	¾" male thread or hose fitting ½"			
Volt	230	400	230	400
rpm	1400		2800	
Ampere	3,2	2 / 1,15	3,2	1,9 / 1,1
motor power	0,37 kW			
temperature max. (with dry run protection)	max.60°C			
weight	9,4 kg			

*bidirectional motor available on request*

# Frequency Converter

## integrated or external frequency Converter

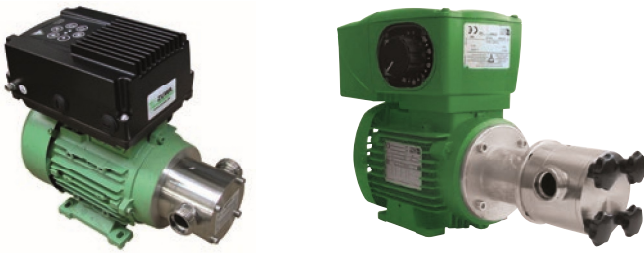
### Variable flow rate

Flexible flow rate controlled by a frequency converter – the exact flow rate can be adjusted when pump is used for filling or dosing. The rotation of the impeller can be reversed if required.

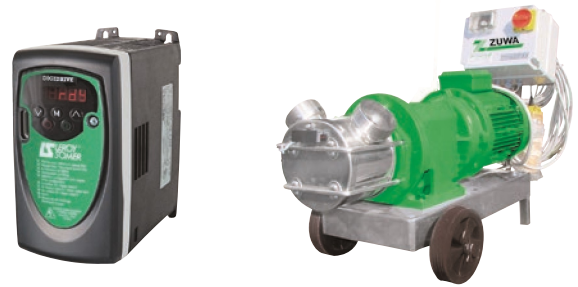
### Features

- ▶ reversion of rotation
- ▶ overload protection
- ▶ precise drive
- ▶ compact design

### Integrated frequency converter:



### External frequency converter:



## Characteristic curves for Pumps with frequency converter:

