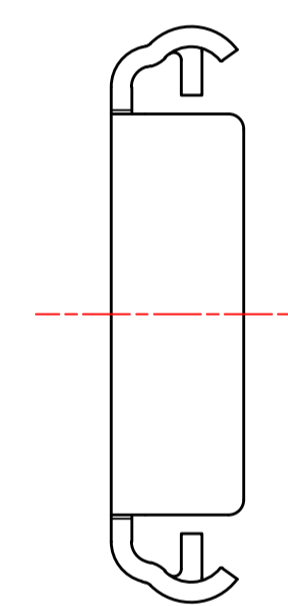
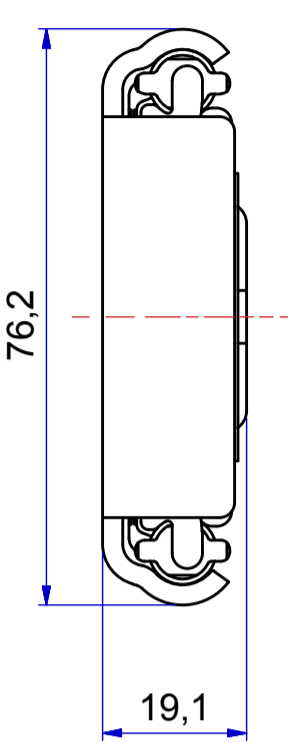
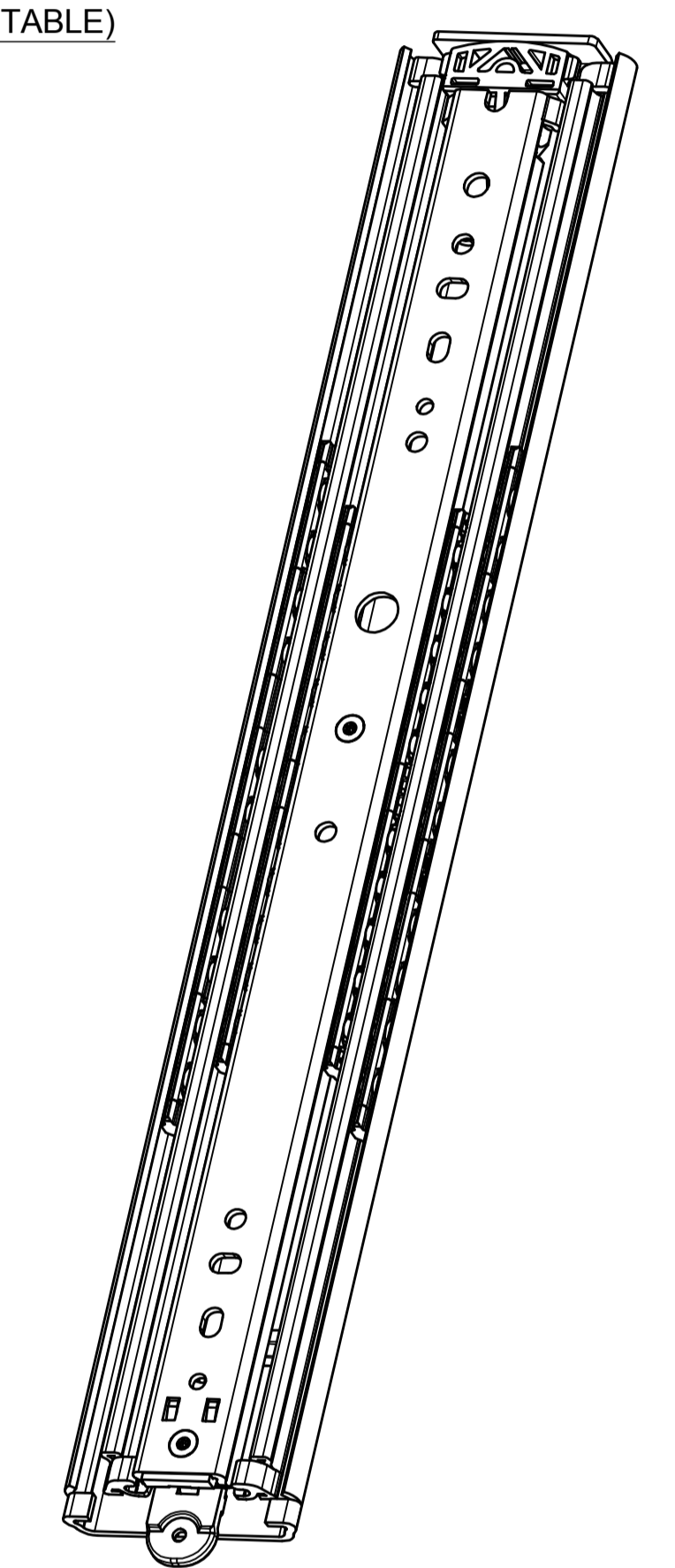
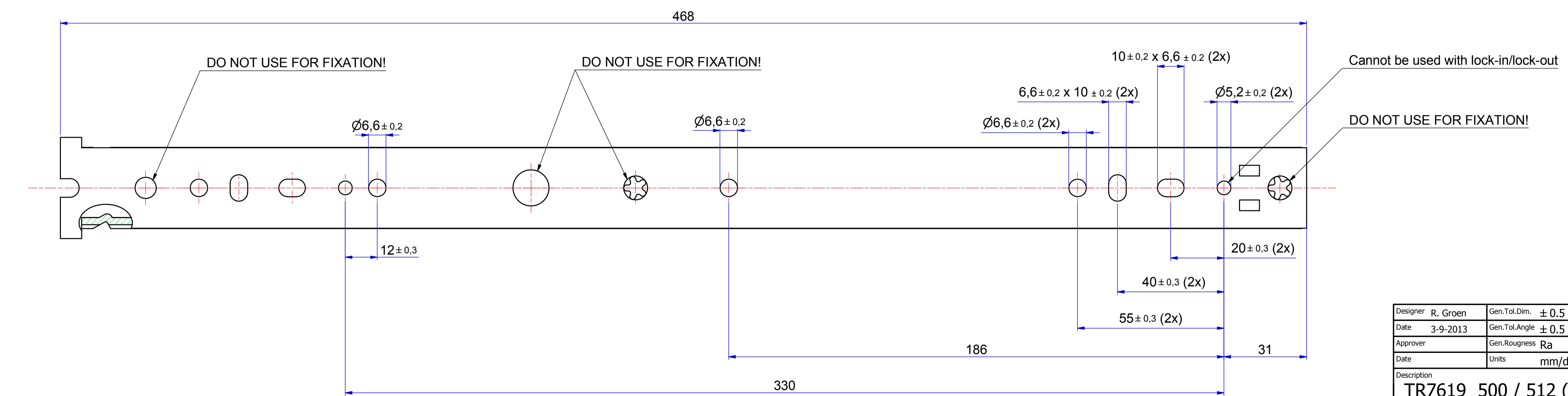
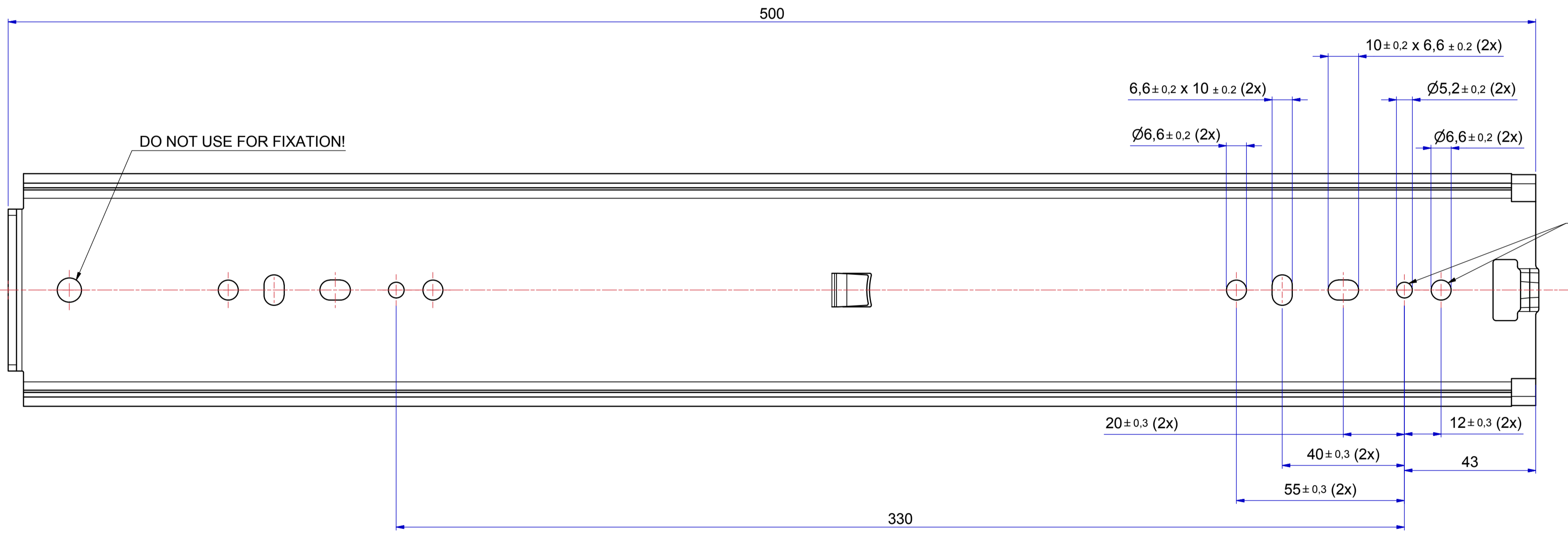
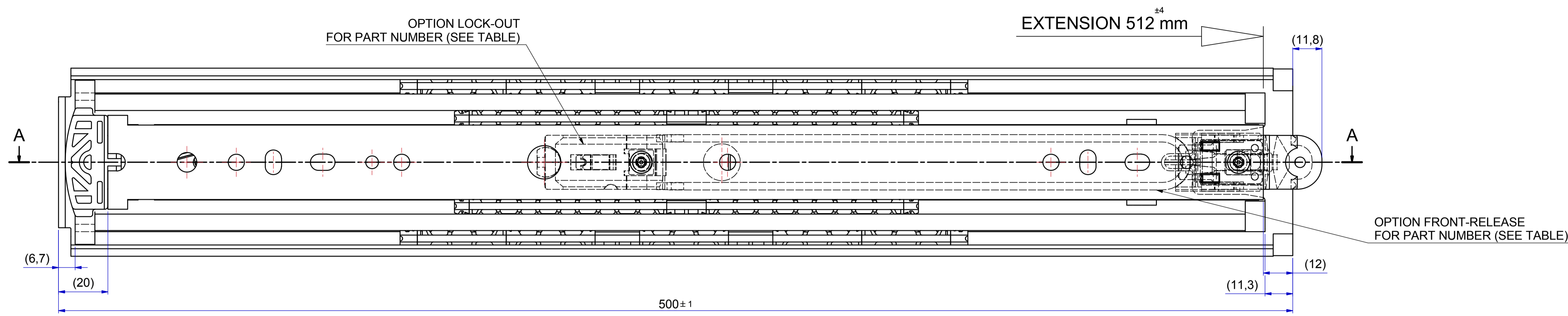
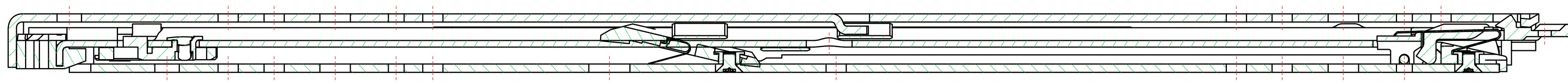
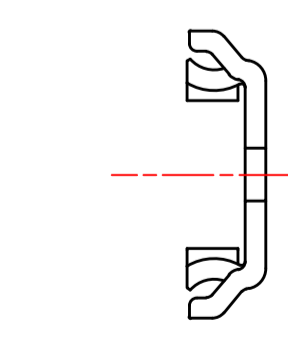


T 1-2 = 247,3 mm  
T 2-3 = 264,7 mm

A-A (1:1)



511-14-S05-TC1



513-14-S05-TC3

# PRODUCTION

RIGHT HAND SLIDE = LEFT HAND SLIDE

Dimensions between marks are guide dimensions.  
Thomas Regout Int. B.V. reserves the right to alter non-customer specific specifications without notice

Designer	R. Groen	Gen.Tol.Dim.	± 0,5	Third angle projection	Material
Date	3-9-2013	Gen.Tol.Angle	± 0,5		Treatment
Approver		Gen.Roughness	Ra		Draw type
Date	11-06-2013	Units	mm/deg.	Scale	1 : 1
Description				Type	Model No.
TR7619 500 / 512 (19,1)				Released for Production	

02	29-09-2015	Modified thickness 18,9 -> 19,1 (As build)	R.Schreurs
02	03-12-2013	Stopsysteem t.b.v front-release gewijzigd	MP
01	11-06-2013	Stopsysteem gewijzigd t.b.v. Front-Release	MP
Rev	Date	Description	Designer

	STANDARD	LOCK-IN	LOCK-OUT	LOCK-IN & LOCK-OUT & FRONT-RELEASE
PART NUMBER	114S05	114S05A	114S05B	114S05D

Format	A1	THOMAS REGOUT INTERNATIONAL B.V.	Item No.	114-S05	Revision	02
© THOMAS REGOUT INTERNATIONAL BV, Industrieweg 40, 6219 NR, Maastricht, The Netherlands, +31 (0)43 351 66 66 All rights are reserved.						