

You don't know our Drum pumps yet?  
Try us and our products!

No matter if you need ready made sets or individual solutions - **we are your partner for efficient processes!**

For filling, dosing or simple emptying media from containers such as drums, buckets, hobboscks, IBC containers etc.

## WS-1 - Garage Drum-Pump-Set

- For frequent use and long operating times
- For non-flammable liquids around the car

### Contents of delivery

- 1 x Motor p400-A-230
- 1 x Pump tube DL-ALU-A-1000
- 2 m Hose PVC reinforced ND 25
- 1 x Hose connector PVDF ND 25
- 2 x Hose clamps SS 316 Ti
- 1 x Nozzle Alu ND 25
- 1 x Barrel adapter PP
- 1 x Wall bracket



### Technical Data

<b>Flow rate:</b>	50-80 l/min
<b>Power:</b>	850 W
<b>Voltage:</b>	230 V
<b>Plunge depth:</b>	1000 mm
<b>Item-No.</b>	460-0002

## CS-1 - Chemistry-Set

- For frequent use and long operating times
- For almost all low-viscosity, non flammable chemicals



### Contents of delivery

- 1 x Motor p400-A-230
- 1 x Pump tube DL-PVDF-A-HC-1000
- 2 m Hose universal-chemical ND 25
- 2 x Hose connector PVDF ND 25
- 2 x Hose clamps SS 316 Ti
- 1 x Nozzle PVDF/FEP 1 1/4"
- 1 x Barrel adapter PP
- 1 x Wall bracket



### Technical Data

<b>Flow rate:</b>	50-80 l/min
<b>Power:</b>	850 W
<b>Voltage:</b>	230 V
<b>Plunge depth:</b>	1000 mm
<b>Item-No.</b>	420-0002

## BS-1 - Base-Set

- For short and temporary use
- For low viscosity, non-flammable liquids, thinned acids and alkalis

### Contents of delivery

- 1 x Motor p310-A-230
- 1 x Pump tube DL-PP-A-Niro-1000
- 2 m Hose PVC reinforced ND 19
- 1 x Hose connector PP ND 19
- 2 x Hose clamps SS 316 Ti
- 1 x Nozzle PP/FPM/SS ND 19
- 1 x Barrel adapter PP
- 1 x Wall bracket



### Technical Data

<b>Flow rate:</b>	30-50 l/min
<b>Power:</b>	520 W
<b>Voltage:</b>	230 V
<b>Plunge depth:</b>	1000 mm
<b>Item No.</b>	410-0002

## AS-1 - Around-Set

- For frequent use and long operating times
- For concentrated acids and alkalis

### Contents of delivery

- 1 x Motor p400-A-230
- 1 x Pump tube DL-PP-R-HC-1000
- 2 m Hose PVC reinforced ND 25
- 1 x Hose connector PP ND 25
- 2 x Hose clamps SS 316 Ti
- 1 x Nozzle PP/FPM/HC ND 25
- 1 x Barrel adapter PP
- 1 x Wall bracket



### Technical Data

<b>Flow rate:</b>	50-80 l/min
<b>Power:</b>	850 W
<b>Voltage:</b>	230 V
<b>Plunge depth:</b>	1000 mm
<b>Item-No.</b>	415-0011

## ES-1 - ATEX-Set

- For frequent use and long operating times
- For flammable liquids, flaw acids and alkalis



### Contents of delivery

- 1 x Motor EX700
- 1 x Pump tube Niro-A-1000
- 2 m Solvent hose ND 25
- 2 x Hose fittings brass 1 1/4"
- 1 x Nozzle MS/PTFE
- 1 x Equipotential grounding cable
- 1 x Barrel adapter PP
- 1 x Wall bracket



### Technical Data

<b>Flow rate:</b>	max. 100 l/min
<b>Power:</b>	700 W
<b>Voltage:</b>	230 V
<b>Plunge depth:</b>	1000 mm
<b>Item-No.</b>	430-0002

# Drum pumps

## Advantages und options

### Advantages

#### Low maintenance costs

- Robust, easily exchangeable coupling
- Reinforced immersion tubes
- Strong wave
- Stainless steel for stressed parts
- Sealless pump tubes available
- No thread problems

#### Low investment and operating costs

- One motors for all pump tubes
- Less operating equipment
- Quick coupling and uncoupling of the motor by bayonet catch, locking bracket or quick-change coupling

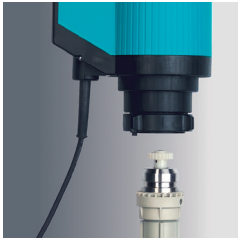
#### No shaft guide tube

- Exposed drive shaft
- Easy to clean
- No dead spaces
- Stable mechanical seal for SD series

#### High security

- Optional magnetic drive for hermetically sealed pump
- Stable motor-pump unit connection
- ATEX certified drum pumps available

### Options



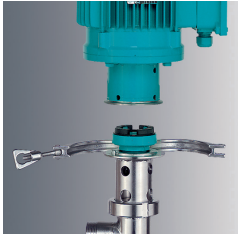
#### Bayonet lock

- Coupling within seconds
- Robust design
- Stable curved-tooth coupling
- Insensitive to dirt and aggressive environment



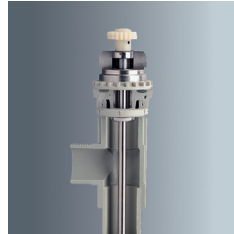
#### MAG

- Magnetic coupling
- Hermetically sealed
- Use for outgassing liquids
- No leakage
- Optional/retrofitable for bayonet lock



#### SWK

- Quick-change coupling for easy separation of motor and pump
- No lifting device necessary
- Easy disassembly for cleaning and maintenance due to special thread



#### DL

- Sealless
- For transferring and emptying drums and containers
- The ideal barrel pump for most lowviscosity media



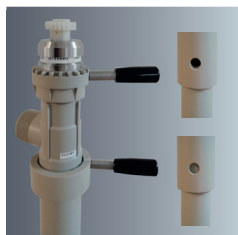
#### SD

- Quickly dismantlable
- Easy disassembly for cleaning and maintenance



#### ds

- Eccentric screw pump for medium viscosity liquids
- Gentle promotion
- Lower speed with three-phase motors



#### MP

- For mixing or pumping (switchable)
- For mixing emulsions, dispersions, suspensions before the pumping process
- In the „mixing“ position, holes are opened in the immersion tube so that the medium can circulate in the barrel
- In the „Pump“ position, the bores are closed and the pumping station functions as a barrel pump



#### S

- With feed screw for mediumviscosity media ( $\eta > 200 \text{ mPas}$ ), when conventional conveying elements reach their application limit
- Can be ideally combined with threephase motors when gentle product conveying is required