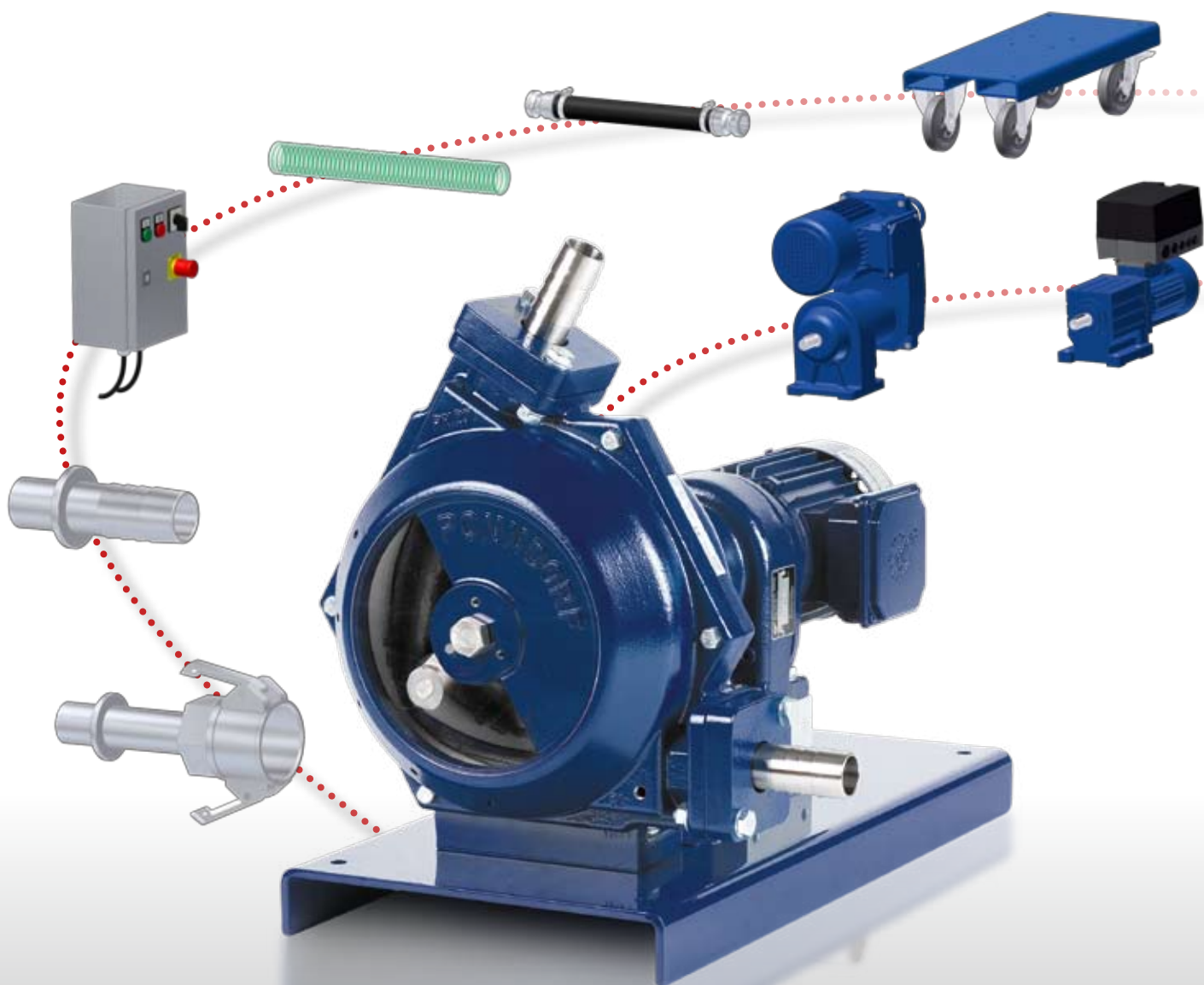


# Ponndorf Hose Pumps



The PONNDORF-range of accessories:

***Customized systems  
specifically for your requirements.***

# As individual as your requirements:

Customized pump systems - from XS up to XXL, from PONNDORF Gerätetechnik of course

## Drives

- gear motor
- variable speed gear
- frequency-controlled drives



## Digital dosing



## Control systems & switchgears



- electrical connection
- level control
- ...etc.

## Pulsation damper



## Large range of connectors



sockets (optional PP or stainless steel)



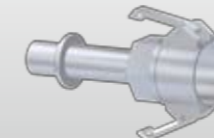
with pipe thread (DIN/NPT)



with dairy pipe thread



with flange



with camlock coupling

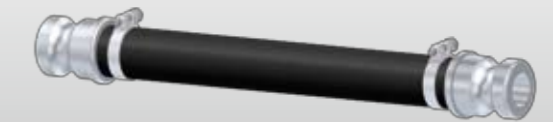


Y-connector, ...etc.

## Connecting hoses



suction and discharge hoses



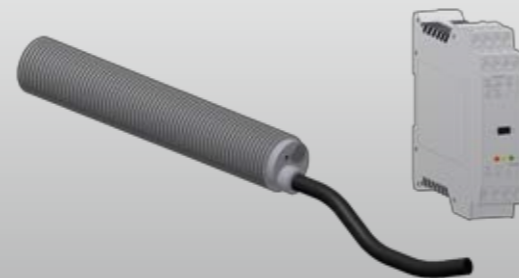
chemically resistant hoses

## Base plates

- made of stainless steel
- fixed
- trolley-mounted for mobile applications



## Hose leakage detection



**Assemble your individual pump system in a few steps.**

# Special solutions specifically for your application

## SUSPENSION PUMP



to prevent sedimentation in the pump hose during shutdown of the pump, e.g. for pumping of crystal suspensions.

## MOBILE WASTE PUMP



for various application ranges with special developed suction lance and suction pipe; ready for connection.

## MOBILE DOUBLE-HEAD HOSE PUMP



for large flow rates and flexible application on premises, e.g. for suction of waste water from inspection points; completely with trailer, suction hoses, Y-pieces, couplings, etc.

## DOUBLE-HEAD HOSE PUMP



for pumping of liquid media without mixing; by application of a special coupling only one pump head is in operation.

Further information about our product range you will find in our folder or please visit our homepage [www.ponndorf.com](http://www.ponndorf.com)

**Ponndorf Gerätetechnik GmbH**  
Leipziger Straße 374  
D-34123 Kassel  
Germany

Tel.: +49.561-51139-0  
Fax: +49.561-51139-88  
E-Mail: [info@ponndorf.de](mailto:info@ponndorf.de)  
Internet: [www.ponndorf.de](http://www.ponndorf.de)

