

Extendable rotating cleaning nozzle PopUp Whirly Series 5P2/5P3



Features:

- Pressure-dependent automatically extending rotating cleaning nozzle
- Can be installed flush in the tank wall
- Suitable for cleaning pipes and applications that use foam
- Particularly suitable for applications in the pharmaceutical, chemical and food and beverage industry



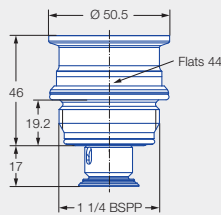
Series 5P2



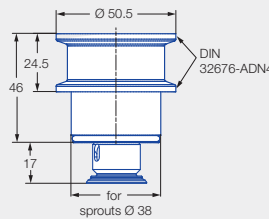
Series 5P3



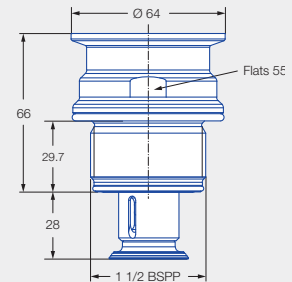
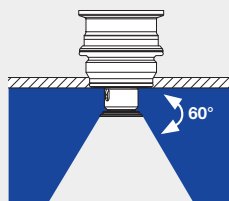
**ATEX version
available on
request**



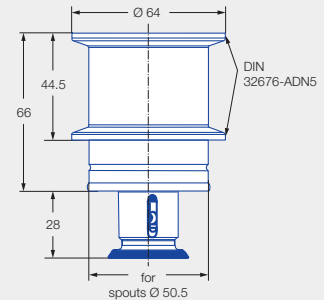
Male thread



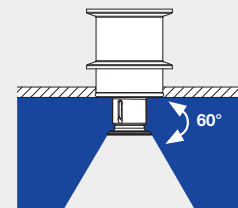
Tri-Clamp connection¹



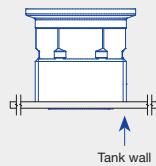
Male thread



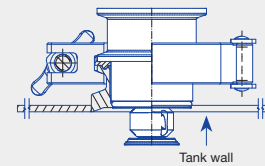
Tri-Clamp connection²



Installation situation



Via thread in idle position



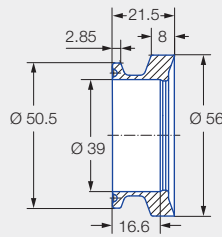
Via Tri-Clamp in operating position

¹ A clamp according to DIN 32676-A with a connection diameter of 50.5 mm is required to connect the nozzle to the weld-in flange.

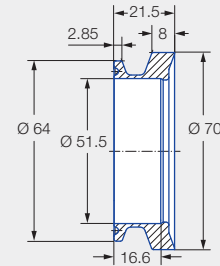
² A clamp according to DIN 32676-A with a connection diameter of 64.0 mm is required to connect the nozzle to the weld-in flange.

Weld-in flange for Tri-Clamp connection

A 2 mm thick gasket must be used if the PopUp Whirly is installed with the weld-in flange.



Ordering no.: 050.020.1Y.01.00
Material: Stainless steel 316L



Ordering no.: 050.020.1Y.01.01
Material: Stainless steel 316L

 Max. tank diameter [m]	0	1	2	3	4	5	6	7	8	9
--	---	---	---	---	---	---	---	---	---	---



Cleaning efficiency class
2



Max. temperature
140°C



Installation
Operation in every direction is possible



Bearing
Slide bearing



Material
Stainless steel 316L,
stainless steel 316Ti,
stainless steel 316,
FKM




Recommended operating pressure
2 bar
5P2: Opening pressure approx. 1.0 bar, closing pressure approx. 0.5 bar,
5P3: Opening pressure approx. 0.9 bar, closing pressure approx. 0.5 bar



Filtration
Line strainer with a mesh size of 0.3 mm/50 mesh



Function video
www.lechler.com/popupwhirly
Or scan the QR code.

Spray angle	Ordering no.				Narrowest free cross section \varnothing [mm]	\dot{V} water [l/min]				Max. tank diameter [m]
	Type	Code				p [bar] ($p_{max} = 5$ bar)				
		1 1/4 BSPP	1 1/2 BSPP	Tri-Clamp		1.0	2.0	3.0	at 40 psi [US gal/min]	
	5P2.873.1Y.AP	●			2.5	11	15	18	5	0.8
	5P2.873.1Y.00			●	2.5	11	15	18	5	0.8
	5P2.923.1Y.AP	●			3.5	14	20	25	6	1.0
	5P2.923.1Y.00			●	3.5	14	20	25	6	1.0
	5P3.043.1Y.AR		●		3.3	28	40	49	12	2.2
	5P3.043.1Y.00			●	3.3	28	40	49	12	2.2

The maximum tank diameter applies to the recommended operating pressure and is meant as a recommendation only.
The cleaning result is also affected by the type of soiling.

Information on operation

- The PopUp Whirly is not suitable for operation with compressed air or any other gas.
- Operation above the recommended operating pressure has a negative impact on the cleaning result and wear.